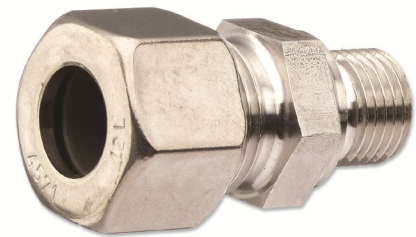


XVS-50

GE VERSCHRAUBUNG

- ✓ G.E. Verschraubung mit zylindrischem Whitworth Rohrgewinde
- ✓ Nach DIN 228



Artikel	PN	Durchmesser	Gewinde	Schlüsselweite	Material
XVS-500618	L	6 mm	G 1/8"	14	VA-Stahl
XVS-500614	L	6 mm	G 1/4"	14	VA-Stahl
XVS-500638	L	6 mm	G 3/8"	14	VA-Stahl
XVS-500612	L	6 mm	G 1/2"	14	VA-Stahl
XVS-500818	L	8 mm	G 1/8"	17	VA-Stahl
XVS-500814	L	8 mm	G 1/4"	17	VA-Stahl
XVS-500838	L	8 mm	G 3/8"	17	VA-Stahl
XVS-500812	L	8 mm	G 1/2"	17	VA-Stahl
XVS-501018	L	10 mm	G 1/8"	19	VA-Stahl
XVS-501014	L	10 mm	G 1/4"	19	VA-Stahl
XVS-501038	L	10 mm	G 3/8"	19	VA-Stahl
XVS-501012	L	10 mm	G 1/2"	19	VA-Stahl
XVS-501218	L	12 mm	G 1/8"	22	VA-Stahl
XVS-501214	L	12 mm	G 1/4"	22	VA-Stahl
XVS-501238	L	12 mm	G 3/8"	22	VA-Stahl
XVS-501212	L	12 mm	G 1/2"	22	VA-Stahl
XVS-501538	L	15 mm	G 3/8"	27	VA-Stahl
XVS-501512	L	15 mm	G 1/2"	27	VA-Stahl
XVS-501534	L	15 mm	G 3/4"	27	VA-Stahl
XVS-501838	L	18 mm	G 3/8"	32	VA-Stahl
XVS-501812	L	18 mm	G 1/2"	32	VA-Stahl
XVS-501834	L	18 mm	G 3/4"	32	VA-Stahl
XVS-502212	L	22 mm	G 1/2"	36	VA-Stahl
XVS-502234	L	22 mm	G 3/4"	36	VA-Stahl
XVS-502210	L	22 mm	G 1"	36	VA-Stahl